

Your Song

Music by Elton John



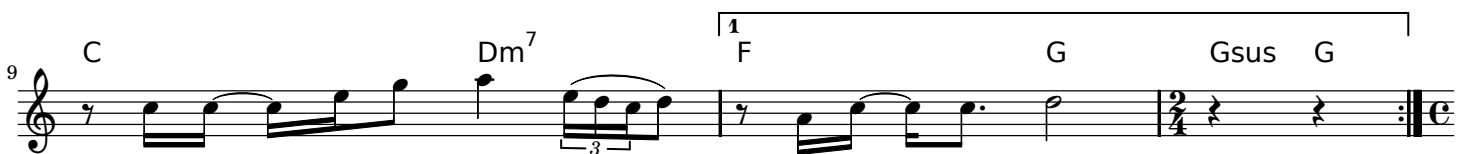
It's a lit - tle bit fun - ny _____ this feel - ing in - side, _____
 If I was a sculp - tor _____ but then a - gain no
 I sat on the roof _____ and kicked _____ off the moss,
 So ex - cuse me for - get - ting _____ but these _____ things I do, _____



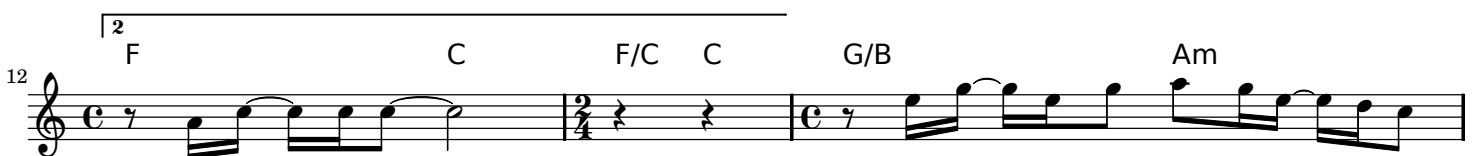
I'm not one of those _____ who _____ can eas - i - ly, hide, _____
 who makes po - tions in a trav - el - in' show, _____ I
 of the vers - es, well they've got me _____ quite cross, _____
 You see I've for - got - ten if they're green or _____ they're blue, _____



I'm don't _____ have much mon - ey, _____ but boy, if I did _____
 know _____ it's not much but it's _____ the best I can do, _____
 But the sun's been quite kind _____ while I wrote this song, _____
 An - y - way _____ the thing _____ is what I really mean, _____



I'd buy _____ a big house where _____ we both _____ could live.
 My gift _____ is my song and _____
 It's for peo - ple like you, that _____ keep it _____ turned on.
 Yours are _____ the eyes _____



this one's _____ for you. _____ And you _____ can tell ev - 'ry - bod - y
 I've ev - er seen. _____

2 Dm⁷ F G/B Am

15 This_ is your song._____ It may be quite_ sim - ple but,

Dm⁷ F Am Last time to Coda Am/G

17 now that it's done_____ I hope you don't mind,___ I hope you don't mind_

Am/F# F⁶ C/E F⁶

19 _ that I put_ down in_ words How won - der - ful life is_ while

F G D.S. al Coda with repeat Gsus G

21 you're in_ the world._____

Am Coda Am/G Am/F# F⁶

23 I hope you don't mind_ I hope you don't mind_ that I put_ down in_ words How

C/E F F G Gsus G

25 won - der - ful life is_ while you're_ in_ the world_

28 ² F C F/C G/C F/C C 3

The image shows a musical score for a single line of music. It begins with a treble clef and a key signature of one flat (Bb). The melody starts with a quarter note G4, followed by a quarter note A4, a quarter note Bb4, and a quarter note C5, all beamed together. The next measure contains a half note C5, followed by a half note Bb4. The third measure has a whole rest. The fourth measure has a whole rest. The fifth measure has a whole rest. The sixth measure has a whole rest. The piece ends with a double bar line. Above the staff, a bracket spans the first two measures, with a '2' above it. Chord symbols are placed above the staff: 'F' above the first measure, 'C' above the second measure, 'F/C' above the third measure, 'G/C' above the fourth measure, 'F/C' above the fifth measure, and 'C' above the sixth measure. The number '28' is at the start, and '3' is at the end. The lyrics 'you're_ in_ the world.' are written below the staff, with lines under 'in' and 'world'.